

IF YOU...



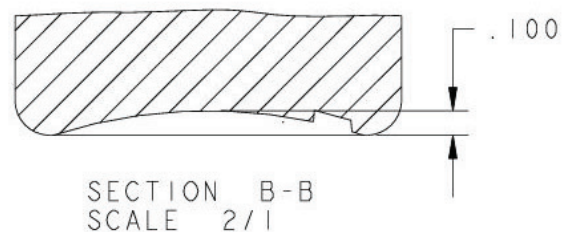
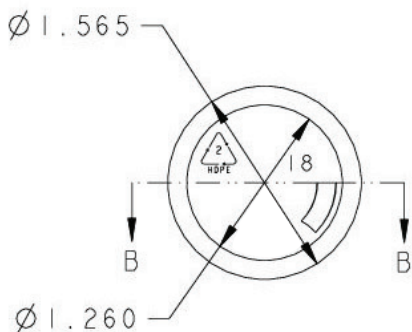
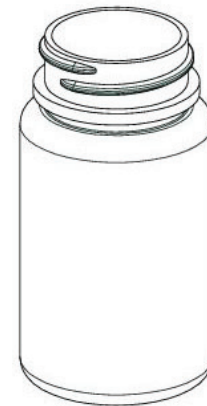
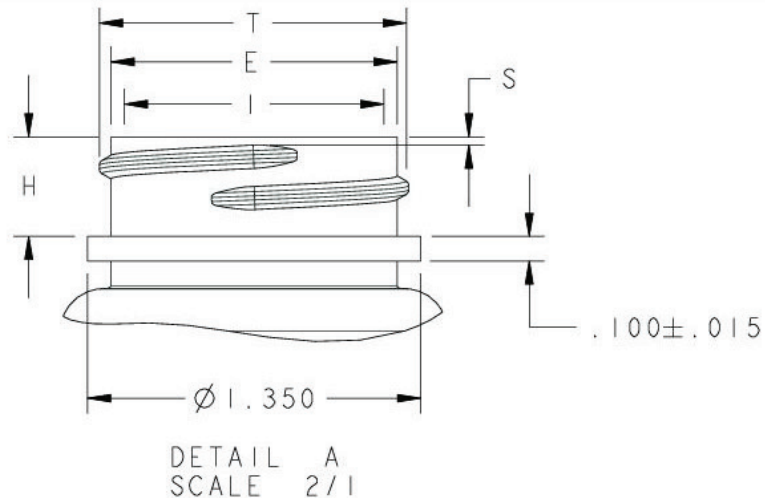
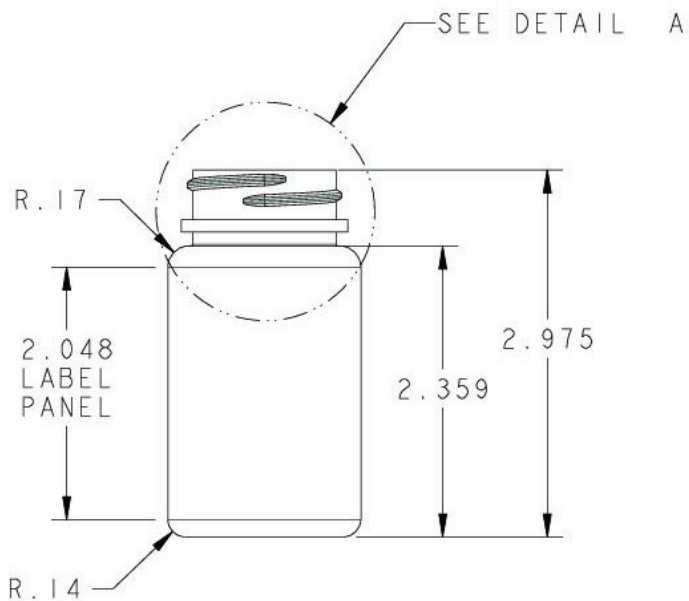
MIX IT. FILL IT. PACK IT. SHIP IT.

WE HAVE A PRODUCT FOR YOU



Part #	30W02N
Capacity	2 oz. (60cc)
Color	Natural
Material	HDPE
Dimensions	1.35" Dia. x 2.975"H
Neck Finish	33-400
Neck Width	33mm
BPA Free	Yes
FDA Approved	Yes
Case Pack	1,000 ea.
Pallet Pack	15,000 ea. (15 Cases)
Industries	Pharmaceutical





Neck Finish: L33SP400		DISCLAIMER: assumes no responsibility for form, fit and function of closures, accessories, and/or shelf life and compatability of intended contents with this bottle.			
All measurements are in inches	Min Thk	Color	Weight	Std. Pack	Revisions
	.015	All Colors	10 Gms±1	1320, Stack 1000, Bulk	F Grm Wt Tol was .5, 06-25-01, sct
Neck Dimensions:					Tolerance: Where not shown Decimal ±0.050 Angular ±1°
T = 1.253±.012 E = 1.159±.012 H = .403±.015 I = .791 MIN S = .046±.015					Material: HDPE
Overflow Capacity: 75 ml ± 3.5					Scale: Drawn By: SCT Date: 05-01-95 60cc STRAIGHT SIDED, HDPE 33-400 CT, IBM 60S33 F Approved By: SJ Drawing NO: 60PS2XX33L400



Supplied By: **The Cary Company**
Ph: 630-629-6600
www.thecarycompany.com