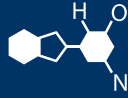


IF YOU...



MIX IT. FILL IT. PACK IT. SHIP IT.

WE HAVE A PRODUCT FOR YOU



Part #	68W1FW
Capacity	128 oz., 1 Gal.
Overflow Capacity	4041 ml. (140 oz.)
Color	White
Material	HDPE
Dimensions	6.975"L x 4.75"W x 10.23"H
Neck Finish	63-445
Neck Width	63mm
BPA Free	Yes
FDA Approved	Yes
Case Pack	50 ea.
Pallet Pack	400 ea. (8 Cases)



S.E.E.



Supplied By: The Cary Company
 Ph: 630-629-6600
 www.thecarycompany.com

SPECIFICATIONS

PRODUCT	F SLANT HANDLE 1 GALLON		FS10
MATERIAL	COPOLYMER HDPE		
DIMENSIONS	HEIGHT	10.230" +/- .020"	
	LENGTH	6.975" +/- .020"	
	WIDTH	4.750" +/- .020"	
WEIGHT (grams)	140 +/- 5/- 2		
GAUGE	.012" MIN. WALL THICKNESS		
FINISHES	63CT		
OVERFILL VOLUMES	140 oz +/- 1 oz (AT STD WT. & COND.)		
LABEL PANEL SIZE	5.500" h x 6.000" w (21.250 perimeter)		

STANDARD LIST OF DEFECTS

EXPECTATIONS

- | | |
|--|---|
| 1. NO ROUGH, UNEVEN OR FLASHED SEAMS OR SEALING SURFACES | 8. NO GOUGES, MARS, NICKS |
| 2. NO OVALIZED NECK FINISH | 9. NO OFF-CENTER TAILS |
| 3. NO CONTAMINATION | 10. NO ROCKER BOTTOMS |
| 4. NO WATER SPOTS | 11. NO IMPROPER FLAME TREAT (WATER FILM STAYS SHEETED FOR 5 SEC.) |
| 5. NO GREASE AND OIL MARKS | 12. NO BUBBLES |
| 6. NO EXTRUSION MARKS | 13. NO GLOBS LARGER THAN A DIME |
| 7. NO HOLES | 14. ALL MEASURED DIMENSIONS TO FALL WITHIN A SPECIFIED TOLERANCE |
| | 15. NO THIN SEAMS OR DIE LINES (SEE MINIMUM WALL THICKNESS) |

ADDITIONAL: F SLANT HANDLE 1 GALLON

- | | |
|----|---|
| A. | NO WEBS IN HANDLE THAT CAUSE THINNING (SEE MINIMUM WALL THICKNESS) |
| B. | NO PANEL WARPAGE OVER 1/8" MEASURED WITH THE TEMPLATE MARKED FS10 |
| C. | NO THIN OR WEAK CORNERS (SEE MINIMUM WALL THICKNESS) |
| D. | "H" DIMENSION MUST BE IN TOLERANCE AT ALL POINTS AROUND THE NECK |
| E. | NO TRIMMER SCARRING OR DENTING |
| F. | MUST PASS DROP IMPACT AND STATIC LEAK TESTS (DROPPED FROM 4' ON LARGE PANEL, 63CR AND 38CR ONLY) |
| G. | 63CR "S" DIMENSION MUST BE CHECKED WITH SPECIAL NOTCHED CAP, SUBTRACTING .042", .084" AND .126" AT THE DESIGNATED LOCATIONS |
| H. | NO DEVIATION GREATER THAN .015" ON 63CR "S" DIMENSIONS. (AFTER SUBTRACTIONS IN ITEM G) |
| I. | NO DEVIATION GREATER THAN .010" ON WALL DISTRIBUTION (FRONT TO BACK) |

EFFICIENCIES

SEE MACHINE STANDARDS CHART

